



**GATOR TILE SAND**  
**FOR PORCELAIN TILE JOINTS UP TO 1"**  
 TDS Revision Date (dd/mm/yyyy): 16/09/2019

# TECHNICAL DATA SHEET

**Update:** September 16, 2019  
 Make sure you have an updated technical data sheet on hand.  
 Canada and U.S. dial **1-855-847-7767** or (450) 624-1611

**Description:** **GATOR TILE SAND** is a unique mixture of polymer binders and calibrated sand, available, that meets ASTM C144 gradation in Beige, Slate Grey, Ivory and Black Diamond. Once **GATOR TILE SAND** sets, it becomes very firm and locks between the tile joints while still retaining flexibility and providing a long lasting, durable jointing material. **GATOR TILE SAND** is recommended for a variety of pedestrian uses including pool decks, patios, footpaths etc.

**Features:**

- Can be used for joints up to a maximum of 1 inch (2.5 cm) and its fine gradation allows use in even the tightest joints.
- Drainage applications, Rain safe 1 hour after water activation
- Non-Drainage (Overlays) applications, Rain safe 24 hours after water activation
- Works above 32°F (0°C)
- Helps prevent weeds and damage caused by burrowing insects.
- Helps prevent erosion due to wind, rain, and freeze thaw cycles
- Waterproof bag: Intact pallets can be stored outside. or bag can be laid flat and stored outdoors. (Lay bag flat on its back, so front of the bag is facing you.)

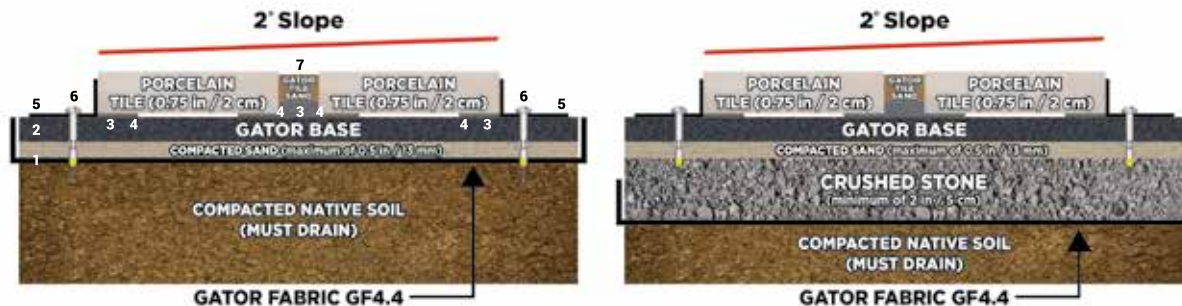
**Moss:** **GATOR TILE SAND** will not cause nor prevent moss, mold or mildew. Moss, mold and mildew are caused by certain on site conditions including excess moisture, shade, absence of ventilation, inadequate cleaning or maintenance, presence of soil or other organic debris left on the product.

**Coverage:** Quantity required depends on the shape and size of the porcelain tiles. For coverage of different sizes of tiles please visit AllianceGator.com under the heading Gator Tile Sand.

		1/4" (6,4 mm) joints 24 x 24 (30 x 30 cm) tile with 1/4" (6.4 mm) joints spacer	
		sq. ft.	sq. m.
Beige , Slate Grey, Ivory	35lbs / 15.9 kg	125 sq. ft.	11.6 sq. m.
Black Diamond	35lbs / 15.9 kg	110 sq. ft.	10.2 sq. m.

**FOR USE ON AND REQUIRED SUB-SURFACE PREPARATION (DRAINAGE APPLICATIONS)**

**GATOR TILE SAND** is recommended for a variety of pedestrian uses including pool decks, patios, footpaths etc.



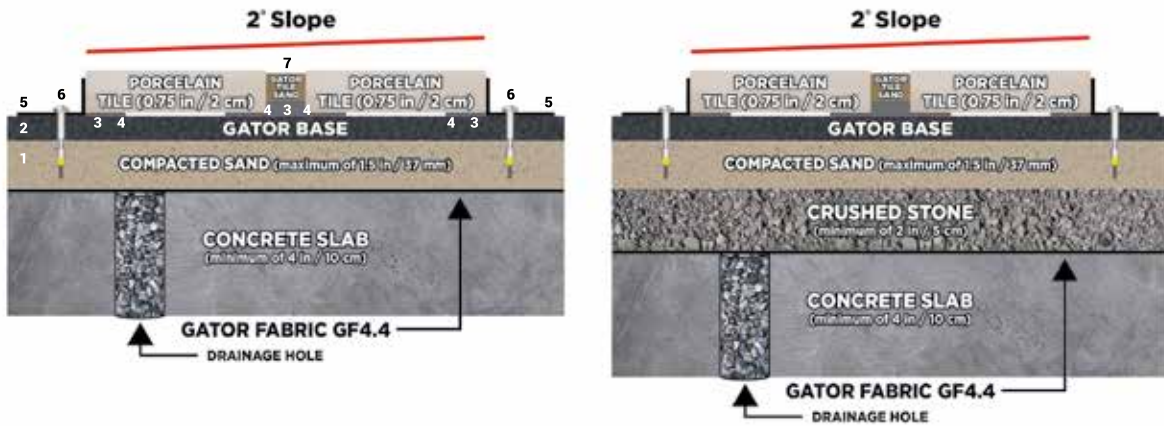
**Alliance Designer Products Inc.**  
 225 Blvd. Bellerose West, Laval, Quebec, Canada H7L 6A1  
 Tel.: 450 624-1611 Fax : 450 624-1622 Toll free : 1 866-212-1611  
 www.alliancegator.com - Email : info@alliancegator.com



**GATOR TILE SAND  
FOR PORCELAIN TILE JOINTS UP TO 1"**  
TDS Revision Date (dd/mm/yyyy): 16/09/2019

**FOR OVERLAYS APPLICATIONS (DIAGRAM 1,2)**

- 1 Remove all loose and fragile concrete.
- 2 Cover the ground with Gator Fabric GF 4.4 geotextile, refill with crushed stone, and compact it.



To use with 0.75 inch (2 cm) outdoor porcelain tile only.

- A minimum 2° top surface slope for proper water runoff
- GATOR TILE SAND at least 3 mm below the Porcelain tile surface
- Minimum depth of joint 17 mm
- Maximum spacer joint width 6,4 mm
- Gator Base must exceed the actual tile installs by 15 cm on all sides
- Layer of sand sand 19mm compacted to 13mm
- For pedestrian applications
- The 7 components of the Gator Tile systems are to be used for the install

**No warranty if Gator Tile System is not used with 7 components listed below are used.**

**GATOR TILE SYSTEM 7 COMPONENTS**



Gator Tile Sand is meant to be used on projects where water can freely drain thru the Gator Base and into the native soils or any other appropriate aggregate or porous concrete ( permeable) material that lies underneath the Gator Base. All areas where the water is unable to evacuate, excessive moisture and humidity will buildup and negatively impact the performance of the Gator Tile Sand. It would be recommended to leave the joints empty under these circumstances to alleviate any moisture issues.



**Alliance Designer Products Inc.**  
225 Blvd. Bellerose West, Laval, Quebec, Canada H7L 6A1  
Tel.: 450 624-1611 Fax : 450 624-1622 Toll free : 1 866-212-1611  
www.alliancegator.com - Email : info@alliancegator.com



## GATOR TILE SAND FOR PORCELAIN TILE JOINTS UP TO 1"

TDS Revision Date (dd/mm/yyyy): 16/09/2019

### GATOR TILE SYSTEM USING GATOR BASE

#### STEP 1 • EXCAVATION OF THE NEW GATOR TILE AREA

Excavate the new Gator Tile area. The depth required is calculated by adding Porcelain Tile height, Gator Base, compacted sand, plus any soft organic material that has to be removed. Excavate the perimeter an extra 6" (15 cm) wider on all sides than the finished tile area requires.

#### STEP 2 • LEVELLING AND COMPACTING OF THE BASE

- (A) • Ensure a slope of at least 1 degree away from any structure, such as a house.
- (B) • The native soil needs to be compacted using a plate compactor or hand tamper.

#### STEP 3 • ADDITION OF GATOR-FABRIC GEOTEXTILE , LEVELLING AND COMPACTED SAND

- (A) • Lay down Gator Fabric GF 4.4, a non-woven geotextile (minimum 100 LBF) and cover the entire excavated and compacted area.
- (B) • Spread an even layer of sand, no more than 3/4" thick (19 mm)
- Levelling and compacting the sand will be the last step prior to installing the Gator Base.
- (C) • Water the sand prior to using a hand compactor and/or plate compactor, compacting the 3/4" (19 mm) layer of sand until you obtain a final height of 1/2" (13 mm) of compacted sand. This compacted surface should reflect the final tiled surface.

#### STEP 4 • INSTALLATION OF THE GATOR BASE

Make sure to install the Gator Base on the extended excavation area (total excavation should be 6" (15 cm) wider on each side than the final tiled area). • Start laying and staggering the Gator Base units ensuring Gator Base interlocks with the tongue & groove system.

#### STEP 5 • INSTALLATION OF PORCELAIN TILE AND GATOR SPACER

Gator Spacers should receive a generous amount of Alliance polyurethane XP glue on each quadrant. Install the Porcelain Tile on the Gator Spacer, apply pressure or tap the tiles with a rubber mallet at all corners. This will ensure that the tiles are adhering to the Gator Spacer. The Gator Spacer will be left in the tile installation permanently, ensuring proper alignment and stability of your project for years to come. N.B. Gator Spacers are offered in 1/4", 3/16" and 1/8" (6.4 mm, 4.8 mm and 3.2 mm) joint sizes.

#### STEP 6 • INSTALLATION OF GATOR TILE EDGE AND GATOR BASE SCREWS

Install Gator Tile Edge on the Gator Base using Gator Base Screws, make sure that Gator Tile Edge rests firmly against the tiles. Use Gator Base Screws at every second hole.

### GATOR TILE SAND INSTALLATION STEPS

#### STEP 7 • SWEEPING, COMPACTING AND BLOWING OF THE GATOR TILE SAND

- (A) • When emptying the bag of GATOR TILE SAND, spread it onto the dry, tiled surface. Please note: When using Gator Tile Sand, the porcelain tiles must be installed on a Gator Base foundation using the Gator Tile System only. • When sweeping the GATOR TILE SAND, spread it over a small area before moving onto the next, while making sure to fill in the joints.
- (B) • It is now time to compact the sand into the joints using a rubber mallet. **Do not use a plate compactor.** Repeat filling and compacting of the tile joints. Finally, sweep the surface with a fine bristle broom and remove all excess sand. • Ensure the sand is 1/8" (3 mm) lower than the tile chamfers
- (C) • Finally, use a blower to blow off all sand residue laying on the tile surface.

#### WATER ACTIVATION (IMPORTANT NOTES)

- A Work in manageable sections, ideally about 100 sq. ft. (10 sq. m.) at a time, depending on temperature.
- B Do not allow GATOR TILE SAND to wash out of joint.
- C Never allow tiled surface to dry out during the water activation phase.
- D Watering must be started at the lowest point of the tiled surface.
- E Use a watering gun connected to a hose. Setting should be set to shower.



**GATOR TILE SAND  
FOR PORCELAIN TILE JOINTS UP TO 1”**  
TDS Revision Date (dd/mm/yyyy): 16/09/2019

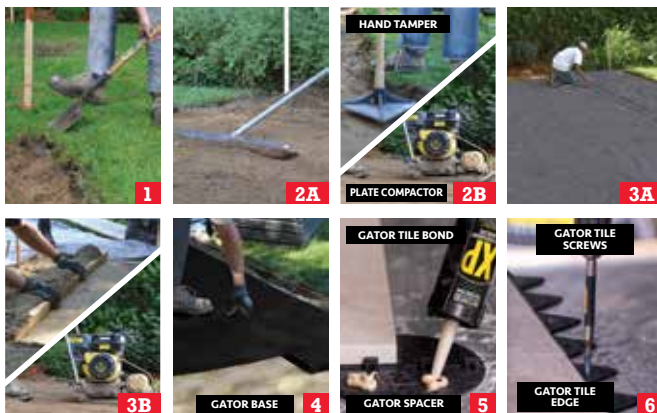
**STEP 8 • GATOR TILE SAND WATER ACTIVATION STEPS**

(A) • Shower water on a specific area of 100 sq.ft. (10 sq. m.), wait no longer than 2 to 3 minutes. (B) • Shower and rinse simultaneously on a section of approximately 100 sq. ft. (10 sq. m.) so as to eliminate any GATOR TILE SAND residue left on the tiles. Any GATOR TILE SAND residue should go directly into the tiled joints. Wait no longer than 2 to 3 minutes. (C) • Shower and rinse simultaneously, so as to eliminate any GATOR TILE SAND residue. Any residue should go directly into the tiled joints. However, stop showering when you see water retention on the tiled joints. Wait no longer than 2 to 3 minutes. Note: Repeat the directions of STEPS 8a, 8b and 8c for all other areas that have not been showered with water. (D) • Use a leaf blower to remove any excess water remaining on the tiles or crevices. This blowing action is necessary to help remove any remaining GATOR TILE SAND residue left on tiled surfaces from the previous steps.

**IMPORTANT**

The water used in steps 8a, 8b and 8c will activate a bonding action as well as condensing GATOR TILE SAND in the joints. It is important to water the GATOR TILE SAND a total of 3 times, as per steps 8a, 8b and 8c. Too little water will not properly activate the GATOR TILE SAND and will reduce the final performance.

**GATOR TILE SYSTEM**



**GATOR TILE SAND INSTALLATION STEPS**



**Typical Properties**

Test	Cure	Method	Value	Unit
Water Penetration	24 hrs	ASTM C-642	<0.51	min:sec
Flexural strength	7 days	BS EN 13892-2	242.25	psi
Drying shrinkage	25 days	ASTM C-596	-0.741	%
Water immersion	7 days	SOP-MP-035	pass	
Resistance to efflorescence	7 days	SOP-MP-036	fail	
Penetration strength	24 hrs	SOP MP-032	149.6	PSI
Spring drive	24 hrs	SOP MP 032	12.75	0-200 scale
Abrasion resistance	24 hrs	SOP MP-030	pass	
Erosion resistance	24 hrs	SOP MP-029	<4.25	% lost
Dirt Pick up during installation	N/A	SOP MP-031	0.604	ΔE value



**Alliance Designer Products Inc.**  
225 Blvd. Bellerose West, Laval, Quebec, Canada H7L 6A1  
Tel.: 450 624-1611 Fax : 450 624-1622 Toll free : 1 866-212-1611  
www.alliancegator.com - Email : info@alliancegator.com





**GATOR TILE SAND  
FOR PORCELAIN TILE JOINTS UP TO 1”**  
TDS Revision Date (dd/mm/yyyy): 16/09/2019

Packaging:	Products	Size	Units per Pallet
	GATOR TILE SAND - Beige	15.9 kg (35 lbs)	40
	GATOR TILE SAND - Slate Grey	15.9 kg (35 lbs)	40
	GATOR TILE SAND - Ivory	15.9 kg (35 lbs)	40
	GATOR TILE SAND - Black Diamond	15.9 kg (35 lbs)	40

**15 YEAR  
LIMITED WARRANTY**

**NEW  
WATER  
PROOF  
BAG**

SEE THE INSTALLATION VIDEO  
ON [ALLIANCEGATOR.COM](http://ALLIANCEGATOR.COM)

**15-YEAR LIMITED WARRANTY ON GATOR TILE POLYMERIC SAND FOR RESIDENTIAL PURPOSES ONLY**

This warranty is given by the manufacturer of this product (hereafter “Manufacturer”). The Manufacturer cannot guarantee results, as it has no control over surface and sub-surface preparation and product application. Moreover, there is no warranty if the porcelain tiles are installed directly on bedding sand or concrete foundation. However, for a period of 15 years from purchase, the Manufacturer agrees, if the product is proven to be defective, and on the condition that it was installed pursuant to the method of application of surface and sub-surface preparation described above, to refund the purchase price of the Gator Tile polymeric sand. Proof of purchase is required for any claim.

**Please Note:** This Tile Sand warranty is only valid if used as part of the entire Gator Tile System. (When used together with all seven components, see installations instructions.)

**Please Note:** This limited warranty applies only when the product is used for residential purposes exclusively (home owners or contractors using the product for single or multi-unit dwellings that are exclusively for residential pedestrian use).

**1 YEAR LIMITED WARRANTY ON GATOR TILE POLYMERIC SAND FOR OTHER USES**

Please note that when the product is used for other pedestrian purposes (mixed-use, commercial, institutional or other), the above terms apply except that the applicable period is reduced to 1 year from purchase.

**EXCLUSION OF RESPONSIBILITY**

THE PARTIES AGREE THAT REFUND OF THE PURCHASE PRICE AS STATED IS THE ONLY OBLIGATION OF THE MANUFACTURER. IN ALL EVENTS, THE MANUFACTURER SHALL NOT BE LIABLE FOR ANY OTHER DAMAGES OR COSTS (INCLUDING REMOVAL OR REINSTALLATION OF SAND OR TILES) WHATSOEVER, DIRECT OR CONSEQUENTIAL. TO THE EXTENT PERMITTED BY LAW, THE MANUFACTURER EXCLUDES ANY IMPLIED WARRANTY OF QUALITY, MERCHANTABILITY OR FITNESS FOR PURPOSE.

Without limiting the generality of the foregoing, GATOR TILE SYSTEMS Shall not be liable for the presence of moss, mold, mildew, or similar factors that may occur on the product after its installation.



**Alliance Designer Products Inc.**  
225 Blvd. Bellerose West, Laval, Quebec, Canada H7L 6A1  
Tel.: 450 624-1611 Fax : 450 624-1622 Toll free : 1 866-212-1611  
[www.alliancegator.com](http://www.alliancegator.com) - Email : [info@alliancegator.com](mailto:info@alliancegator.com)